



Sedibelo Platinum Mines – Pilanesberg Platinum Mine

TMM REGULATIONS ALIGNMENT A MINERALS COUNCIL SPECIAL PROJECT

Ntsiky Phokwana | MOSH Transport & Machinery Team | 23 October 2025

MOSH TMM CPS Symposium, Silverstar Casino, Muldersdrift



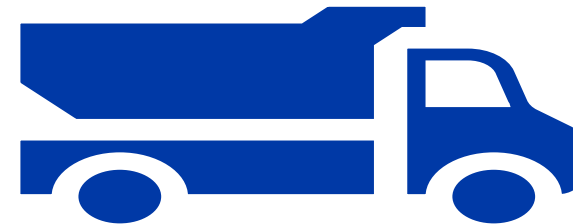
MINERALS COUNCIL
SOUTH AFRICA

Contents

1. Meet the Team



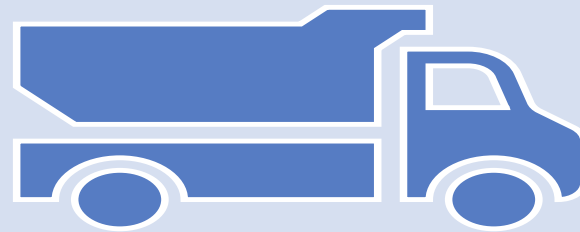
2. TMM Regulatory Alignment Project



**1.
Meet the Team**



**2.
TMM Regulatory
Alignment Project**



Who we are and what we do



We are a mining industry employers' organisation that supports and promotes the South African mining industry.



We serve our members and promote their interests by providing strategic support and advisory input. We facilitate interaction among members to examine policy issues and other matters of mutual concern to crystallise and define desirable industry standpoints.



We act as a principal advocate to government, to state-owned enterprises, communicating major policies endorsed by our members. We represent the industry internationally.



In some sectors, we undertake collective bargaining with organised labour on behalf of members.

Our members

90%

Our members represented more than 90% of the volume of minerals production in South African in 2024

In 2024 our membership comprised:

72

Direct members

3

Mining associations, representing more than 250 mining companies

The MOSH Team



EXECUTIVE

Adoption Team Sponsor
(One per Team)

Minerals Council
Board

CEO Zero Harm
Forum
& Others



Minerals Council
Executive



LEARNING HUB

MOSH SECRETARIAT
Head + 4 x Specialists

MOSH NOISE
Adoption Team
(Specialist) +
2xManagers

MOSH DUST
Adoption Team
(Specialist) +
2xManagers

MOSH FALLS OF
GROUND
Adoption Team
(Specialist) +
2xManagers

MOSH
TRANSPORT &
MACHINERY
Adoption Team
(Specialist) +
2xManagers



The MOSH T&M Team

MOSH TRANSPORT & MACHINERY

Adoption Team

(Specialist) +
2xManagers

Objective:

To find leading practices that have the highest potential for reducing transport and machinery incidents and facilitating adoption by the rest of the industry.



Nomvula Ngcobo
Adoption Team Manager

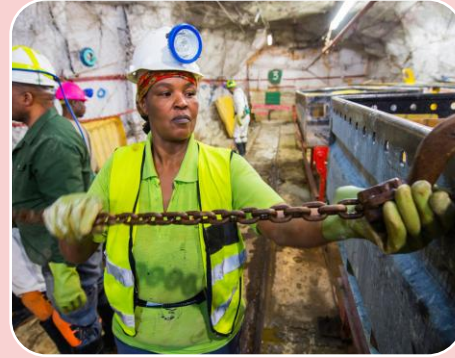


Cholo Likhi
Principal Adoption Team Specialist



Ntsiky Phokwana
Adoption Team Manager

Transport and Machinery Agencies



Trackless
Mobile
Machinery
(TMM)

Scraper
Winches

Railbound
Equipment
(RBE)

Conveyors

Electricity



**1.
Meet the Team**



**2.
TMM Regulatory
Alignment Project**



TMM Regulations Timeline



2012 MHSC Summit



The South African Mining Industry needs to be aware of and **ARREST** the increase in TMM related accidents!



TMM Regulations Timeline

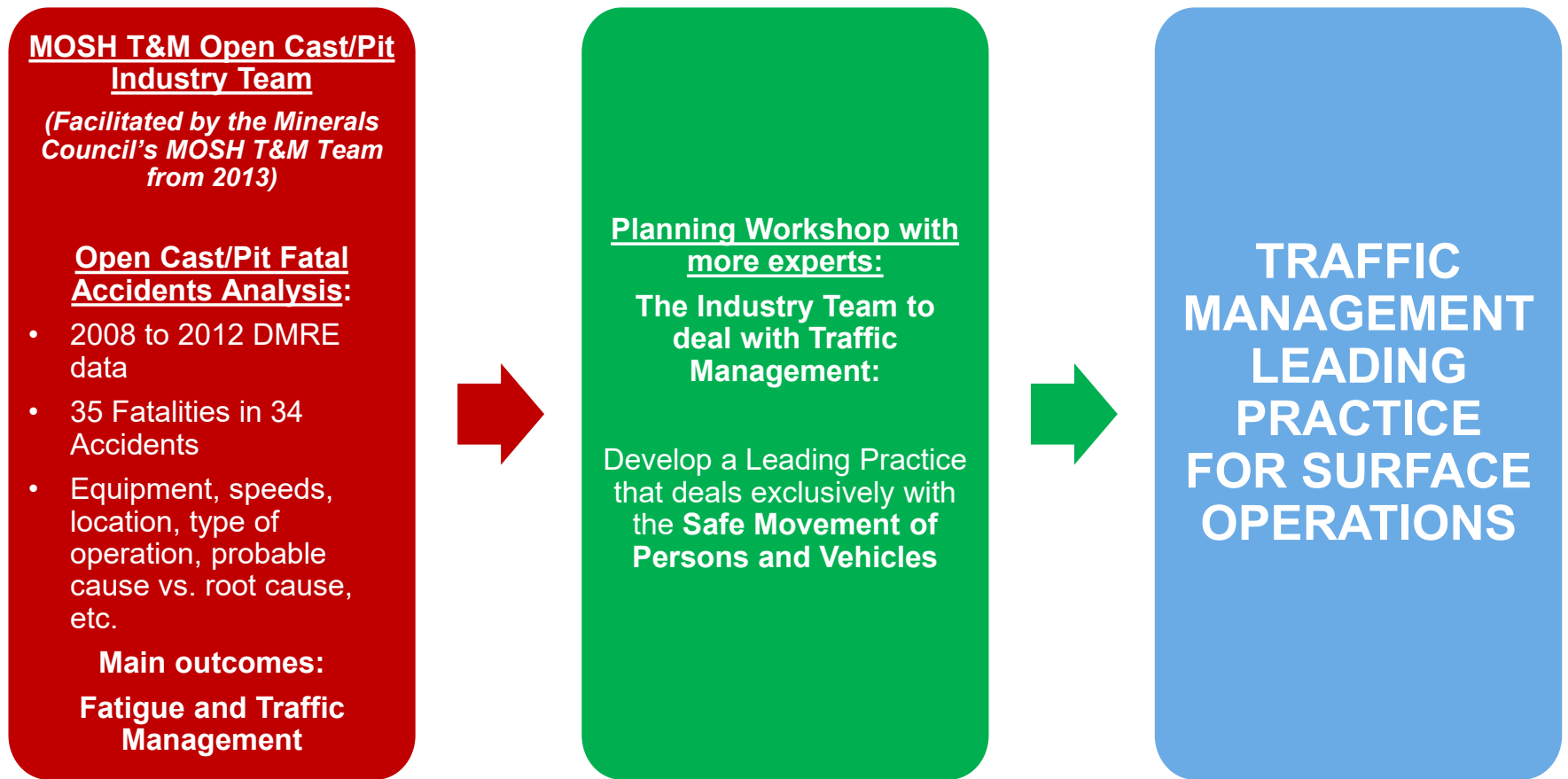


2013

Work started:
MOSH Traffic
Management
Leading Practice
for Surface
Operations



(Brief History of the Surface Traffic Management Leading Practice)



TMM Regulations Timeline



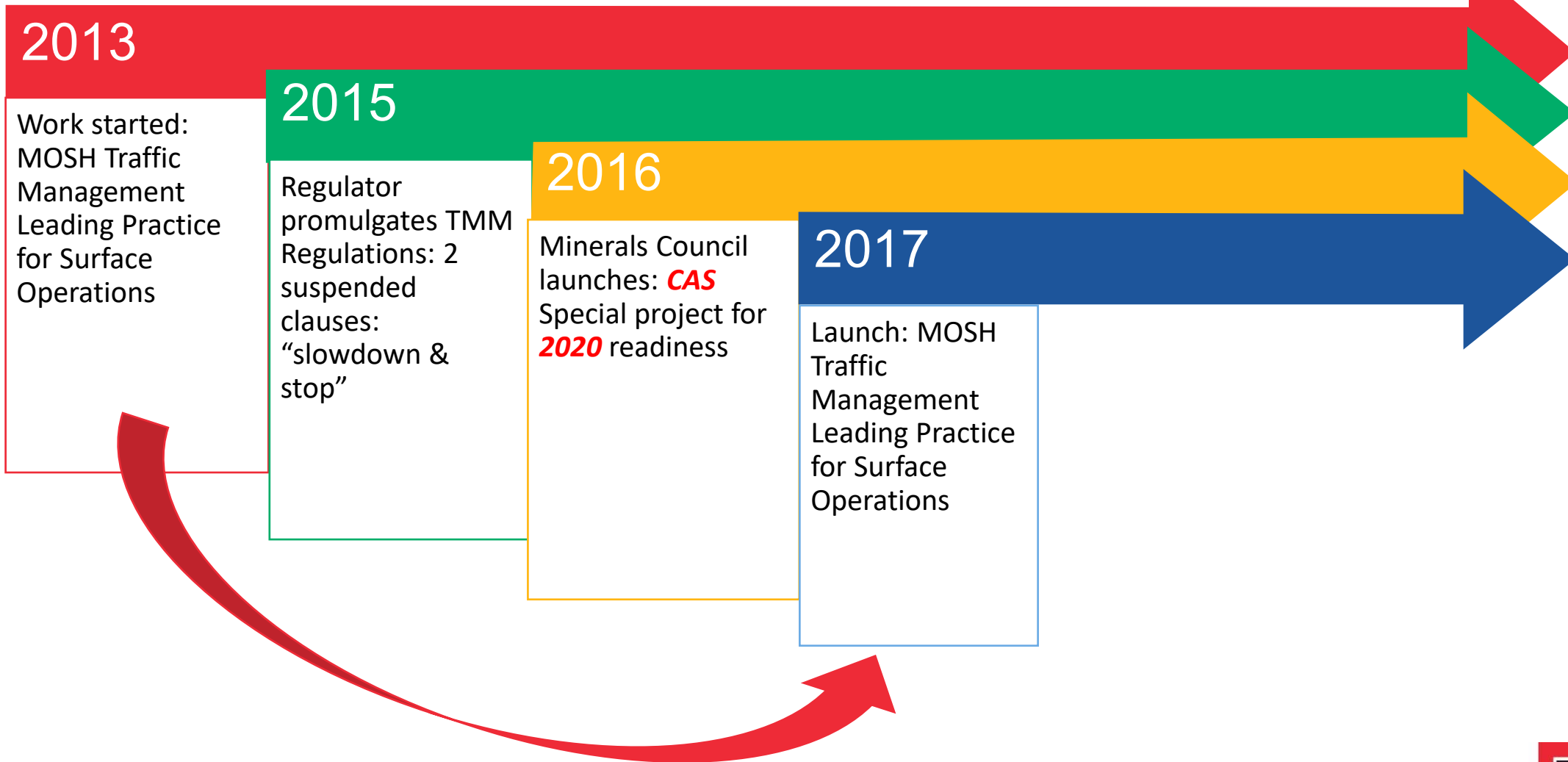
(TMM Regulations Summary)



...where the risk of such collisions is significant:

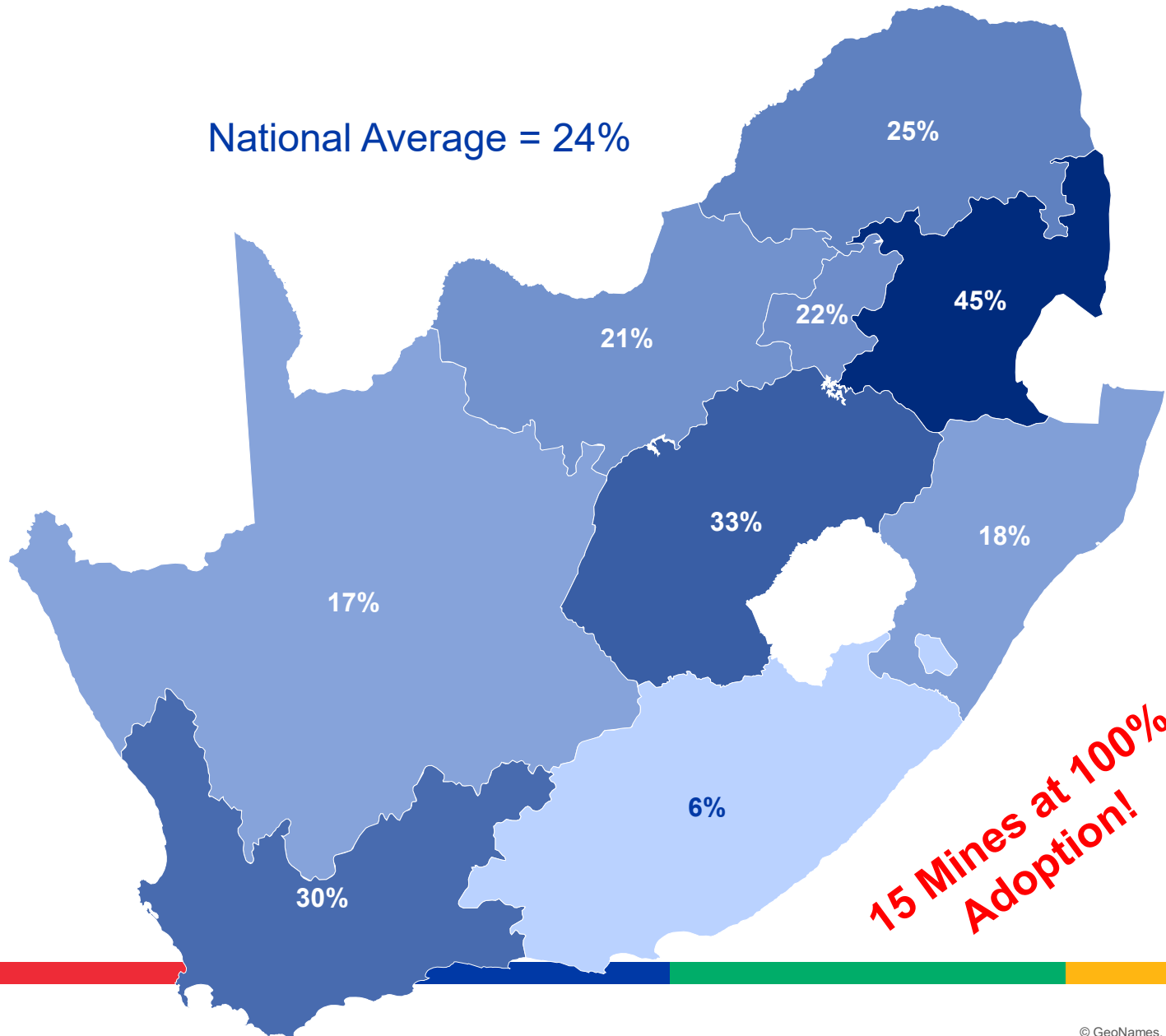
	Vehicle-Person 8.10.1	Vehicle-Vehicle 8.10.2	Vehicle- Environment	Loss of Control
General movement	Reasonably Practicable	Reasonably Practicable	Reasonably Practicable	Reasonably Practicable
Electrical / Battery	Automatic stop	Reasonably Practicable	Reasonably Practicable	Reasonably Practicable
UG Diesel	Automatic stop	Reasonably Practicable	Reasonably Practicable	Reasonably Practicable
Opencast / Open Pit	Reasonably Practicable	Automatic stop	Reasonably Practicable	Reasonably Practicable
UG Railbound	Reasonably Practicable	At Least Warning to TMM	Reasonably Practicable	Reasonably Practicable

TMM Regulations Timeline



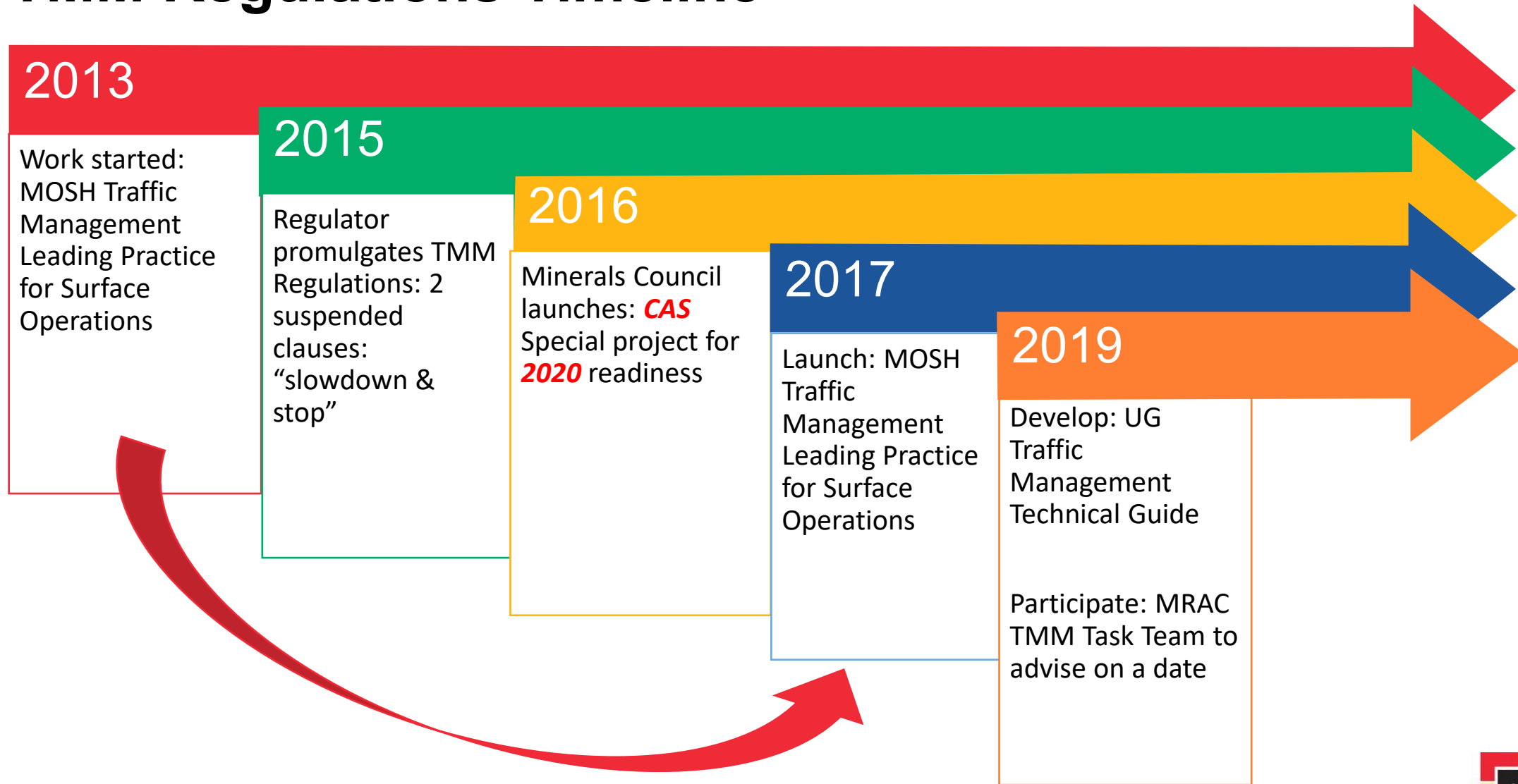
Surface Traffic Management Leading Practice

Average Percentage Adoption per Region



Launch Order	Region	Number of Adopters
1	Northern Cape	14
2	Mpumalanga	34
3	North-West	17
4	Gauteng	17
5	Free State	5
6	Limpopo	9
7	KwaZulu Natal	22
8	Western Cape	4
9	Eastern Cape	3
		125

TMM Regulations Timeline



MINERALS COUNCIL SPECIAL PROJECT: INDUSTRY ALIGNMENT ON TMM REGULATIONS



Investing
±R30m

in accelerating CPS ecosystem readiness

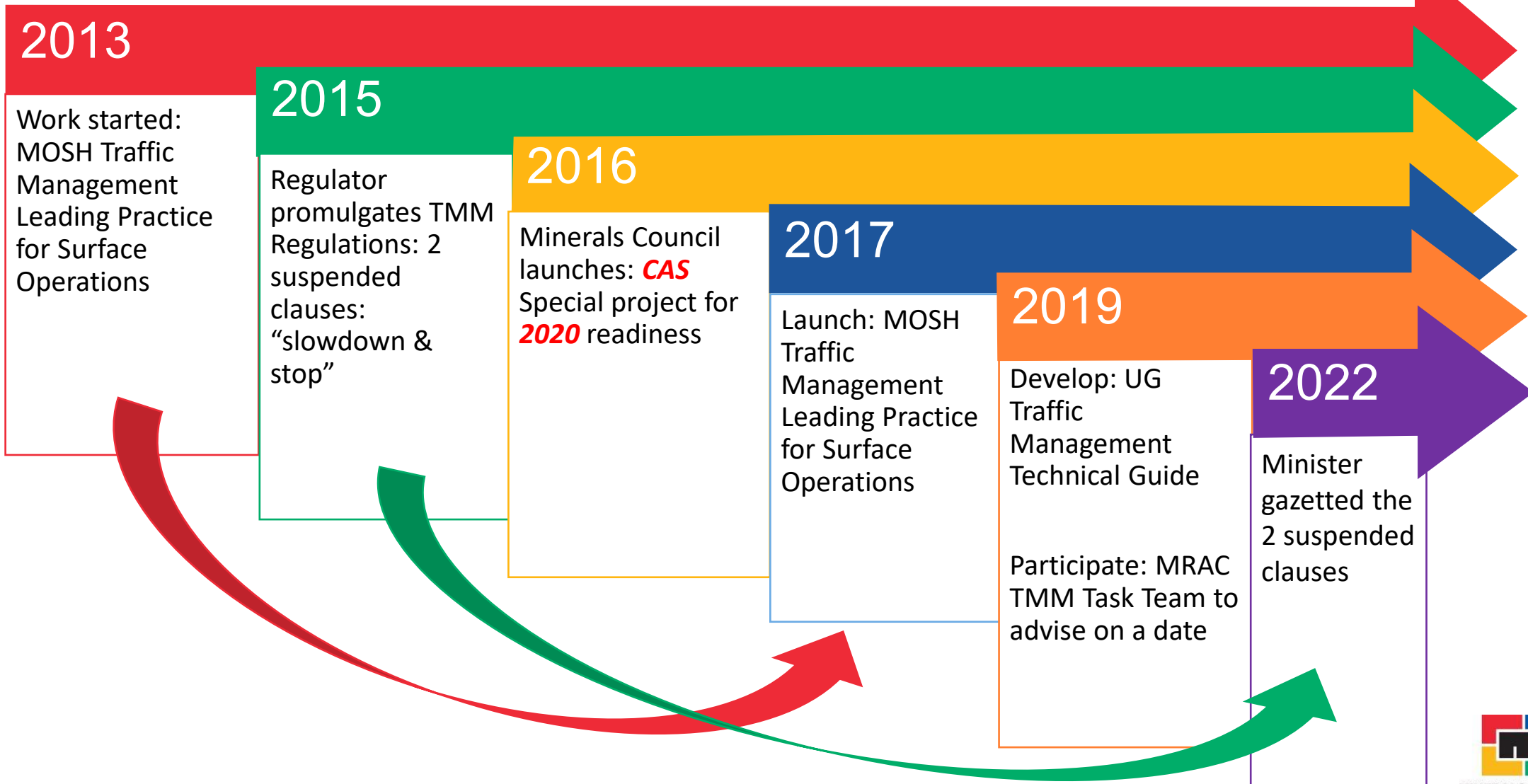
Petra Diamonds – Finsch Diamond Mine

OUR COMMITMENT



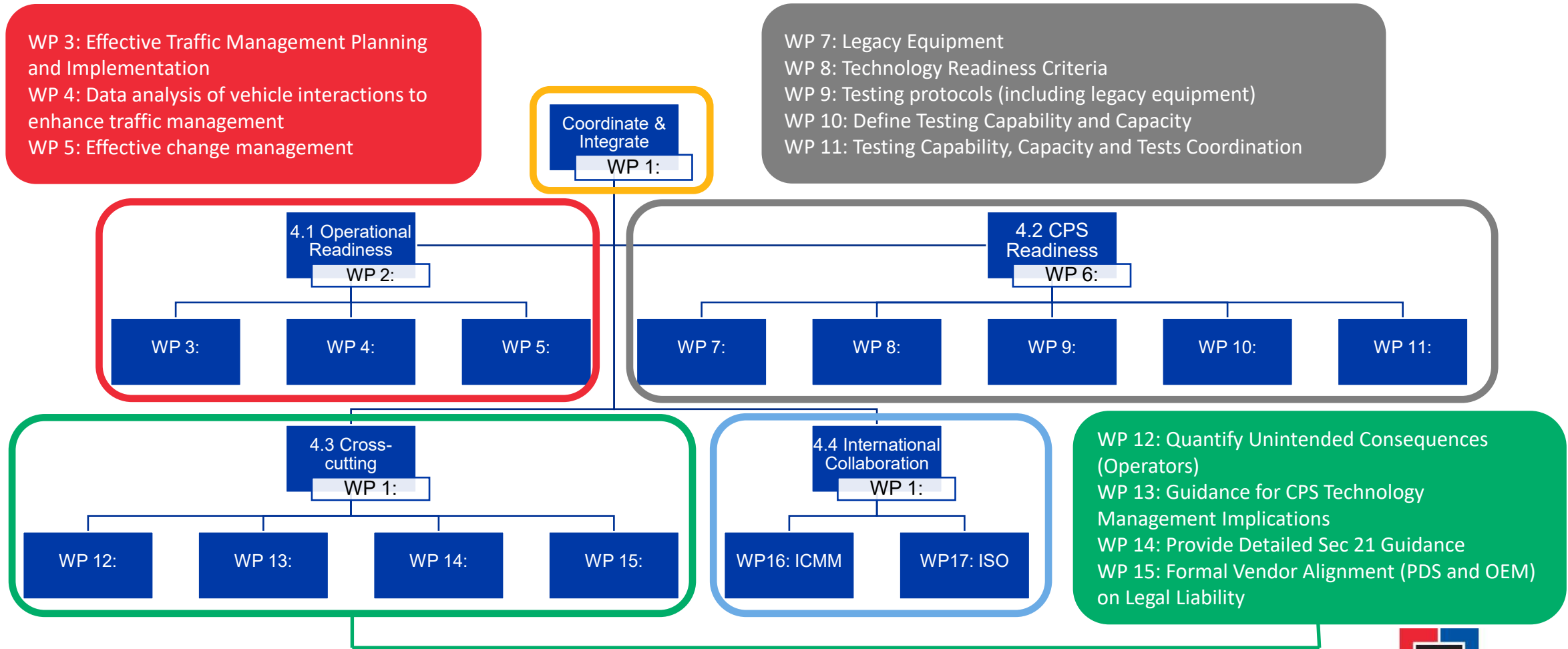
- We are committed to Zero Harm
- We are investing in complex, globally-leading Collision Prevention Systems (CPS)
- We will work with the Regulator, Unions, Suppliers, MHSC, etc. to facilitate CPS ecosystem readiness as quickly as possible using a holistic, risk-phased approach
- We want to strike a balance between saving lives and livelihoods, and we are hence concerned about regulating whilst CPS ecosystem is not yet ready for full implementation
- In the meantime, we will implement other ready measures to eliminate transport accidents

TMM Regulations Timeline





Work Breakdown Structure





EMESRT L9 CAS is not a CPS!

South African TMM Regulations with Legal Liability

- 1 **Specific** Functional Requirements for each of the CPS products, with Acceptance Criteria
- 2 Fail to Safe Without Human Intervention
- 3 Self Diagnostics to enable Fail to Safe Without Human Intervention
- 4 Specific Log Keeping Requirement for Legal Liability Protection
- 5 Effective Warning
- 6 Override for Emergency Only
- 7 Interface Standard (ISO 21815-2: 2021)
- 8 Proof of Conformance Required – Verification Regime
- 9 Specific Test Specifications using Specific Test Instruments

EMESRT CAS L9 International Improvement Initiative

-  **Generalised** Requirements with no Acceptance Criteria (Supplier Defined)
-  **NO** Fail to Safe Requirement
-  **NO** Specific Self Diagnostic Requirement
-  **NO** Specific Requirement
-  **NO** Specific Requirement
-  **NO** Restriction on Override Function
-  **NO** Specific Requirements (Supplier Defined)
-  **NO** Proof of Conformance Required (Supplier Defined)
-  **NO** Specific Requirements (Supplier Defined)





Documents www.mosh.co.za/transport-and-machinery/documents

Common Member Differentiated Approach & CPS Process Flow

Interpretation of TMM Regulations

Case study

Good Practice Guide

CPS Technical Documents

CPS Skills Readiness

CPS Unintended Consequences on Operators

Infographic - TMM Regulations

CPS EMI/EMC Documents





Anglo American Platinum – Dishaba Mine

www.mosh.co.za/transport-and-machinery/

Thank you

#MiningMatters

T +27 11 498 7100 E info@mineralscouncil.org.za W www.mineralscouncil.org.za

7th Floor Rosebank Towers, 19 Biermann Ave, Rosebank, Johannesburg, 2196

