



MHSC

Mine Health and Safety Council

Industry Safety Statistics Moment of Silence

Zamaswazi Nkosi (Specialist - Mine Safety: Mine Health and Safety Council)

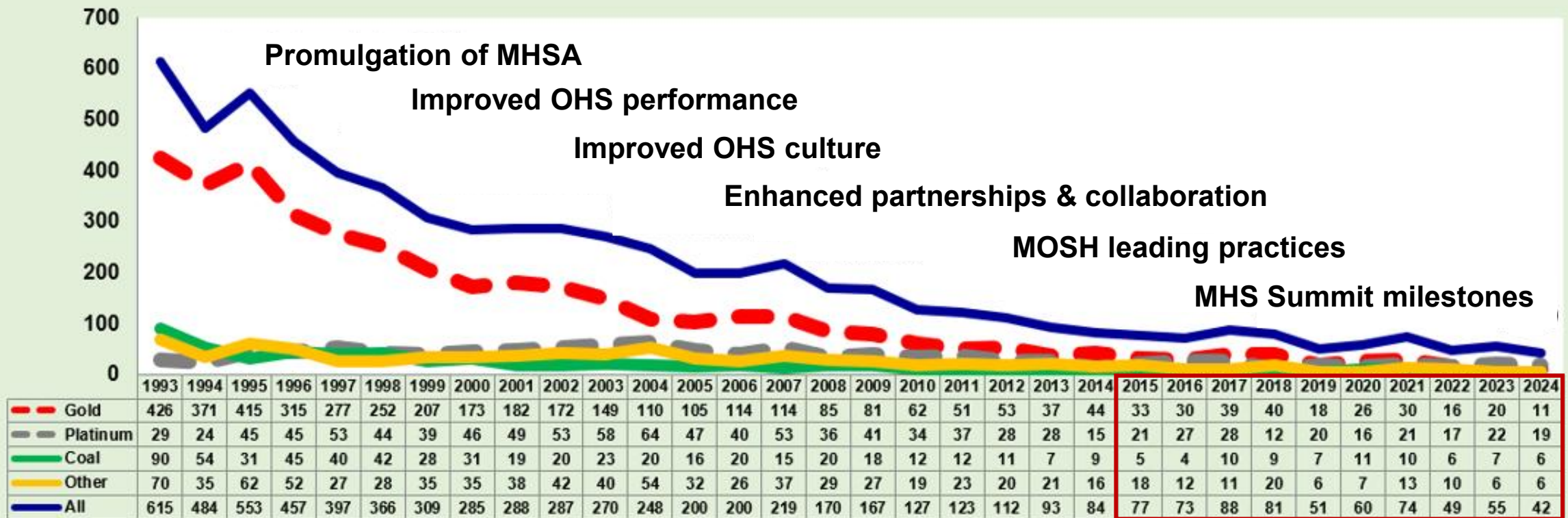
TMM CPS Symposium

23rd of October 2025

Every mine worker returning from work unharmed every day. Striving for zero harm in our lifetime.

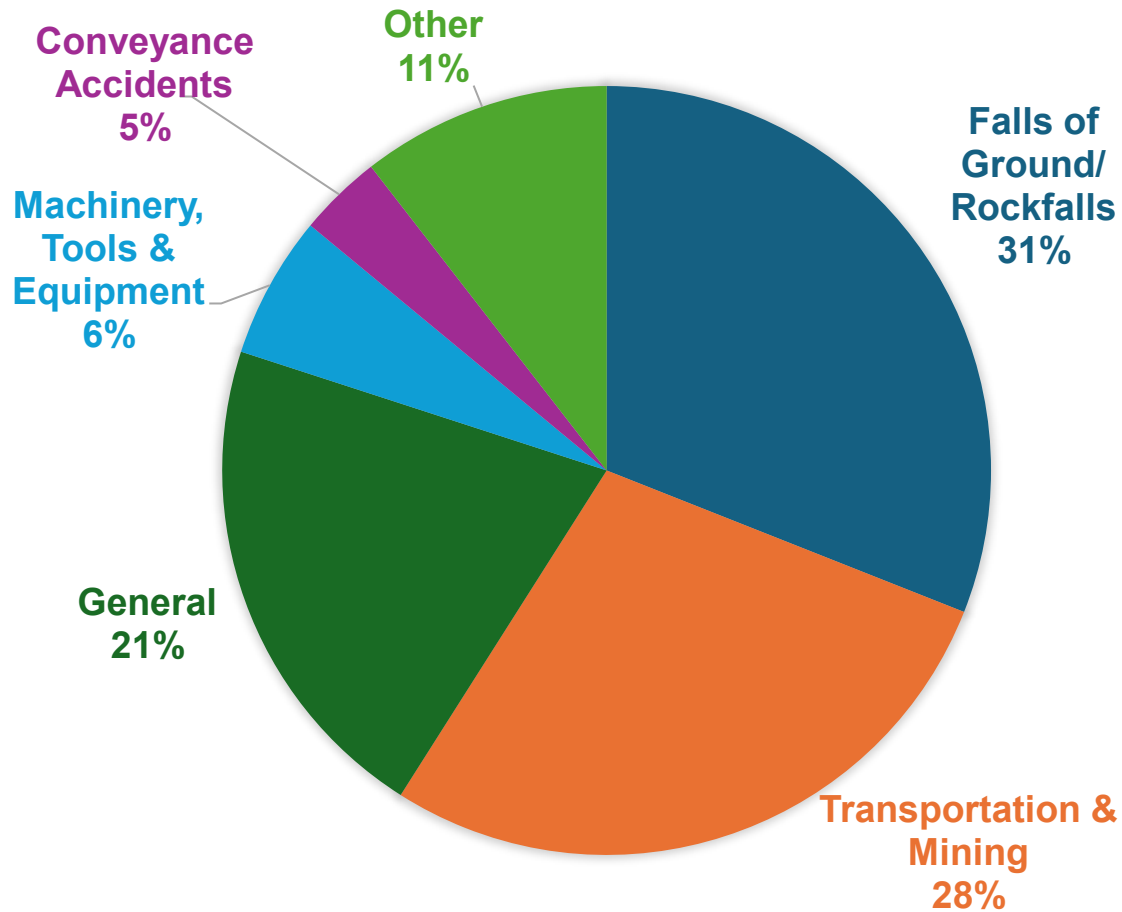
Overview of recent trends

Fatalities by Commodity



Every mine worker returning from work unharmed every day. Striving for zero harm in our lifetime.

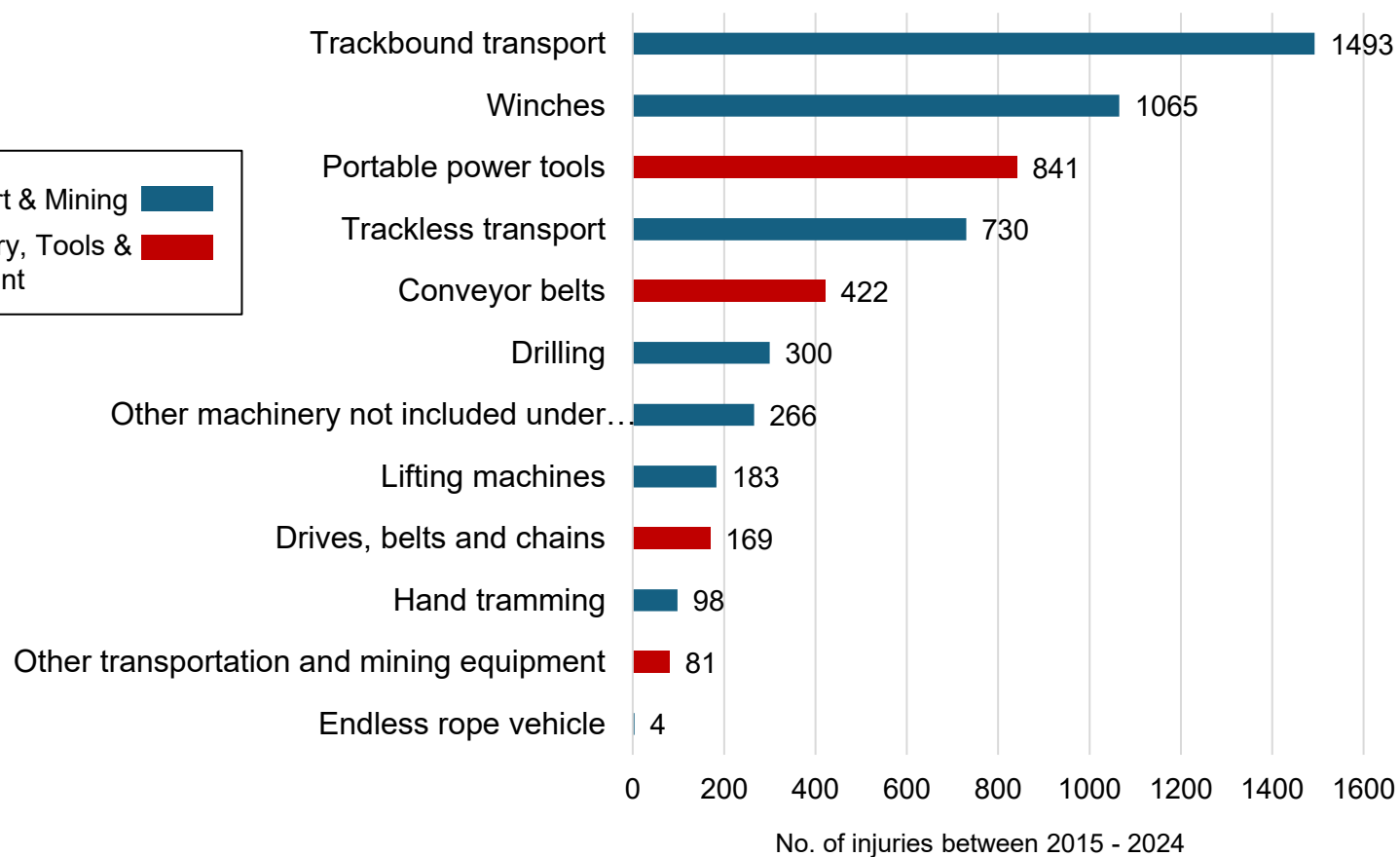
Contributors to fatalities (2015-2024)



- **Falls of Ground (31%)** remains leading cause of fatalities over the past decade.
- **Transportation & Mining (28%)** which includes Trackless Mobile Machinery (TMM)- related incidents, is **the second-largest contributor**, emphasizing the importance of **Collision Prevention Systems (CPS)** and safer vehicle interactions.
- **General causes (21%)** such as “pressed against”, “struck by” “slip & fall” remain a persistent contributor across all commodities.
- Together **these 3 categories account for ~80%** of all mining fatalities from 2015-2024.

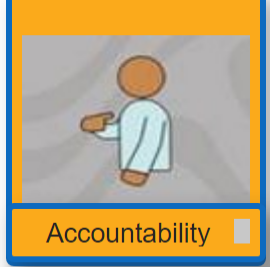
Every mine worker returning from work unharmed every day. Striving for zero harm in our lifetime.

Injuries related to transportation, mining, and machinery (2015-2024)



- Trackbound transport & winches are the largest **single injury sources**.
- Trackless transport also accounts for a **significant portion**
- Within machinery, tools and equipment, portable power tools and conveyor belts are **dominant injury sources**.
- Combined, these two broad categories contribute **over 5,600 injuries** between 2015-2024 — underscoring the critical need for **engineering controls, operator awareness, and maintenance discipline**

Every mine worker returning from work unharmed every day. Striving for zero harm in our lifetime.



20 October, 2025

Weekly Safety Dash Board from DMPR

Menu

Fatalities

Injuries

Fatalities' Detail

WiM

Disclaimer:
The information display on the Dashboard is provisional data as received from the Department of Minerals and Resources and is depend on changes due to reporting circumstances.
If there is an error on the pages please send a message to lmartin@mhsc.org.za

Acronyms:
MHSC - Mine Health and Safety Council
MtSRiP - May their Souls Rest in Peace
DMPR - Department of Minerals Petroleum and Resources
TZH - Towards Zero Harm
PY is previous year
YTD year to date
YoY year on year
SAMI - South African Mining Industry
WiM - Woman in Mining



Fatalities in the South African Mining Industry (MtSRiP)

20 October, 2025



- Menu
- Fatalities
- Injuries
- Fatalities' Detail
- WIM

2024

32

Previous Year...

2025

37

This Year Fat...

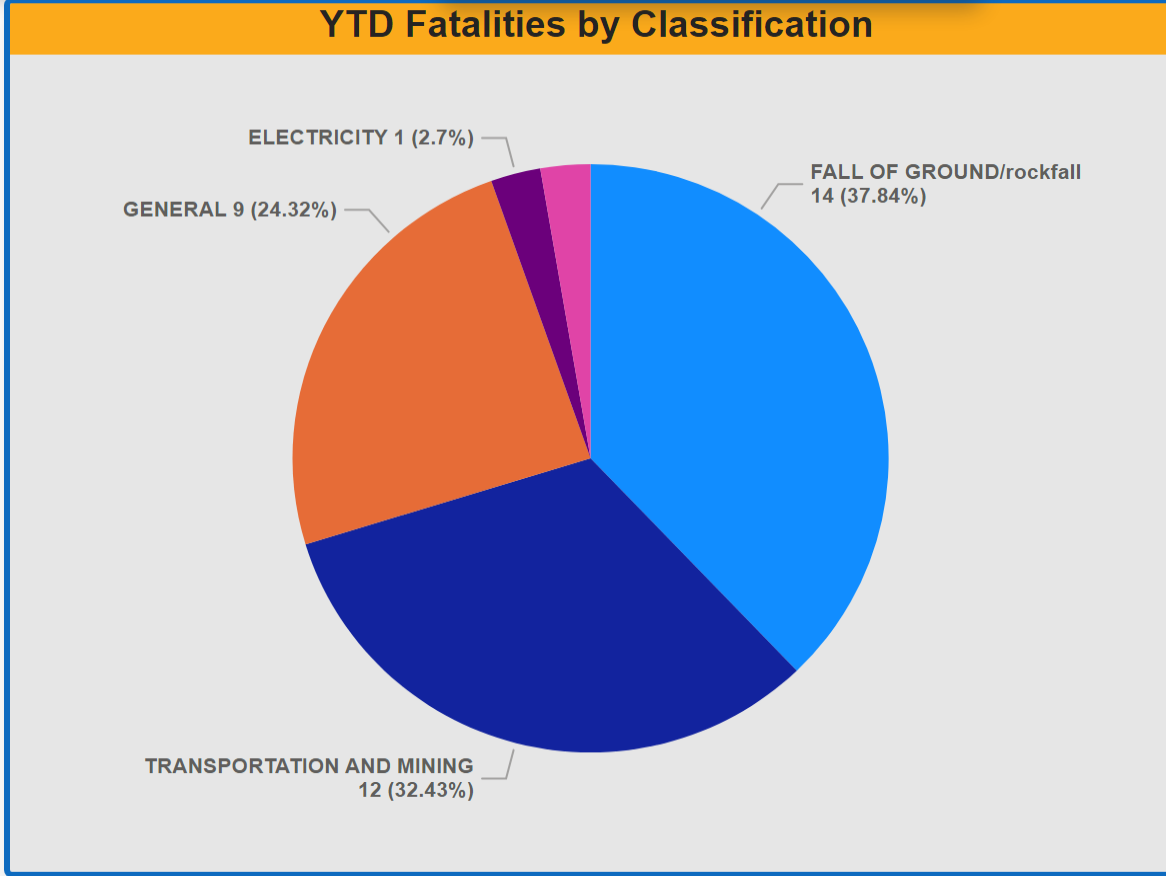
YoY diff

-16%

YoY diff

Days Since last Recorded Fatality

2 days

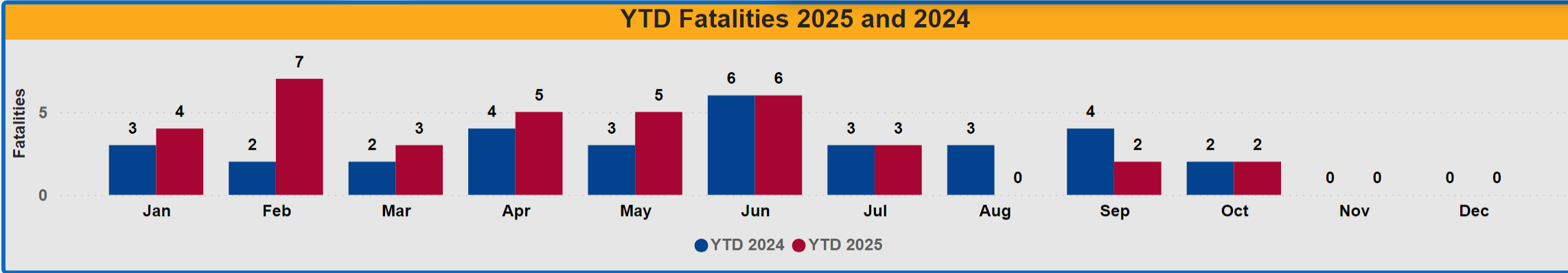


Commodities % diff YTD

| Commodity | PY | YTD | YoY |
|--------------|-----------|-----------|-------------|
| Gold | 10 | 20 | -100% |
| Platinum | 12 | 9 | 25% |
| Chrome | 2 | 2 | 0% |
| Diamonds | 1 | 2 | -100% |
| Coal | 6 | 1 | 83% |
| Copper | 0 | 1 | TZH |
| Manganese | 0 | 1 | TZH |
| Other mines | 1 | 1 | 0% |
| Iron ore | 0 | 0 | TZH |
| Total | 32 | 37 | -16% |

Regional % Diff YTD

| Region | PY | YTD | YoY |
|---------------|-----------|-----------|-------------|
| Gauteng | 7 | 11 | -57% |
| Rustenburg | 13 | 11 | 15% |
| Free State | 2 | 6 | -200% |
| Mpumalanga | 5 | 3 | 40% |
| Northern Cape | 2 | 3 | -50% |
| Limpopo | 1 | 2 | -100% |
| Klerksdorp | 0 | 1 | TZH |
| Eastern Cape | 0 | 0 | TZH |
| KwaZulu/Natal | 2 | 0 | 100% |
| Western Cape | 0 | 0 | TZH |
| Total | 32 | 37 | -16% |





- Menu
- Fatalities
- Injuries
- Fatalities' Detail
- WiM

2024

1615

PY Injuries

2025

1420

YTD Injuries

YoY diff

12%

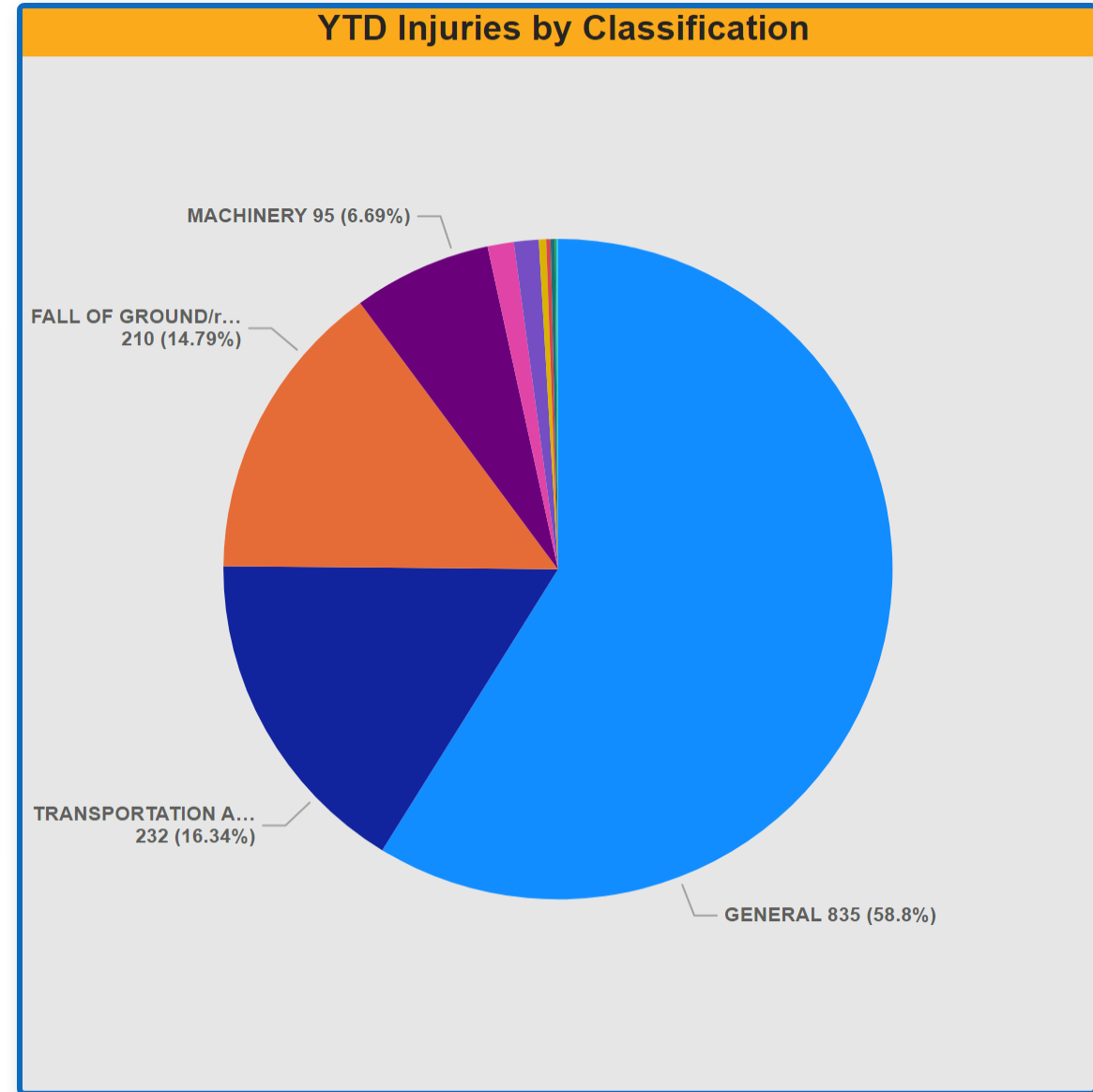
YoY Injuries

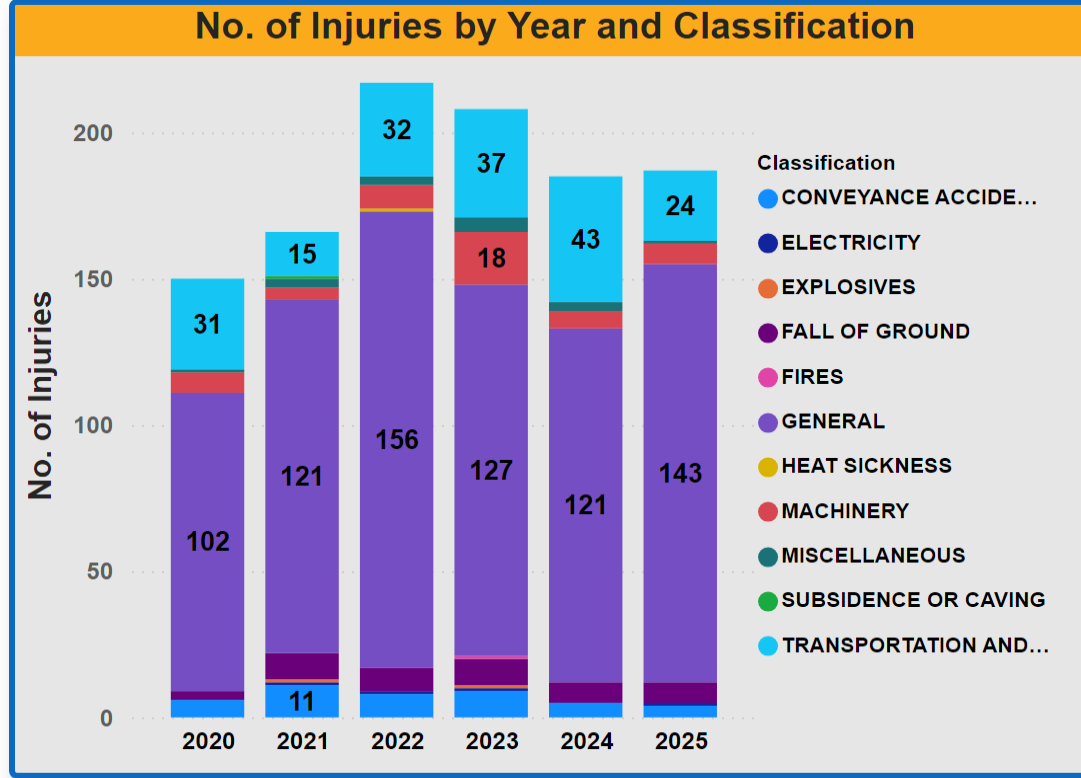
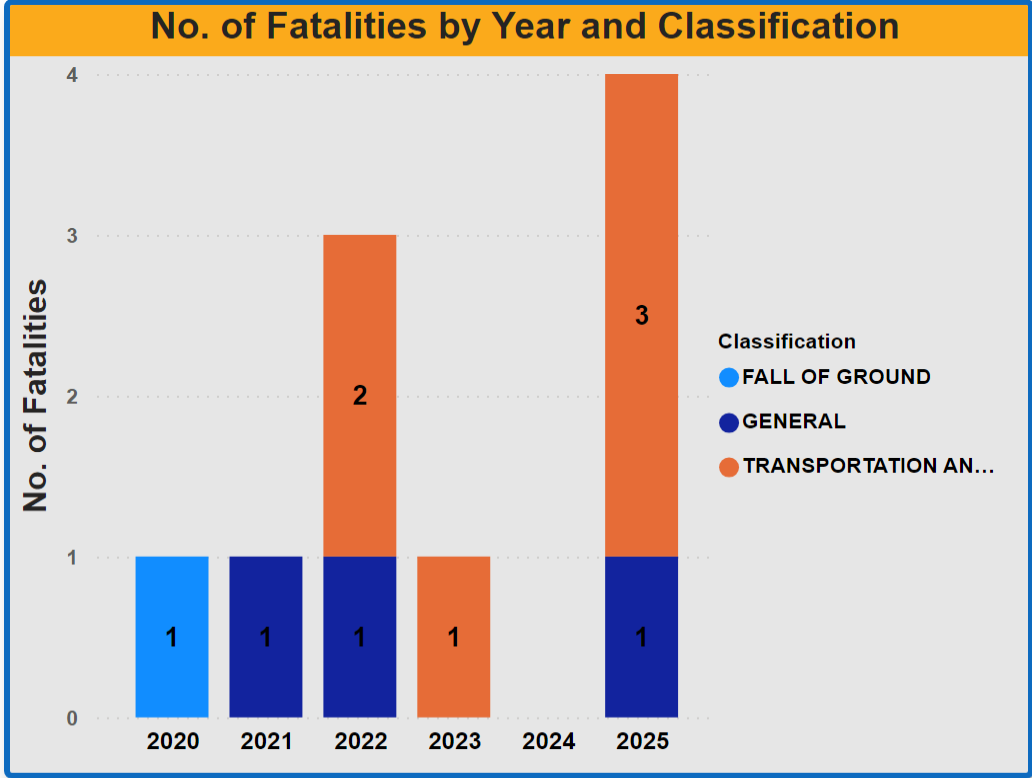
Commodities % diff YTD

| Commodity | PY | YTD | YoY |
|--------------|-------------|-------------|------------|
| Copper | 10 | 2 | 80% |
| Diamonds | 30 | 19 | 37% |
| Manganese | 23 | 15 | 35% |
| Other mines | 81 | 61 | 25% |
| Coal | 167 | 141 | 16% |
| Platinum | 708 | 634 | 10% |
| Gold | 505 | 456 | 10% |
| Iron ore | 24 | 24 | 0% |
| Chrome | 67 | 68 | -1% |
| Total | 1615 | 1420 | 12% |

Regional % diff YTD

| Region | PY | YTD | YoY |
|---------------|-------------|-------------|------------|
| Eastern Cape | 1 | 0 | 100% |
| Northern Cape | 84 | 60 | 29% |
| Limpopo | 145 | 108 | 26% |
| Klerksdorp | 93 | 79 | 15% |
| Mpumalanga | 195 | 167 | 14% |
| Free State | 126 | 109 | 13% |
| KwaZulu/Natal | 10 | 9 | 10% |
| Gauteng | 299 | 273 | 9% |
| Rustenburg | 655 | 607 | 7% |
| Western Cape | 7 | 8 | -14% |
| Total | 1615 | 1420 | 12% |





WiM Fatalities per Classification

| Classification | 2020 | 2021 | 2022 | 2023 | 2024 | 2025 |
|---------------------------|----------|----------|----------|----------|----------|----------|
| FALL OF GROUND | 1 | 0 | 0 | 0 | 0 | 0 |
| GENERAL | 0 | 1 | 1 | 0 | 0 | 1 |
| TRANSPORTATION AND MINING | 0 | 0 | 2 | 1 | 0 | 3 |
| Total | 1 | 1 | 3 | 1 | 0 | 4 |

WiM Injuries per Classification

| Classifications | 2020 | 2021 | 2022 | 2023 | 2024 | 2025 |
|---------------------------|------------|------------|------------|------------|------------|------------|
| TRANSPORTATION AND MINING | 31 | 15 | 32 | 37 | 43 | 24 |
| SUBSIDENCE OR CAVING | 0 | 1 | 0 | 0 | 0 | 0 |
| MISCELLANEOUS | 1 | 3 | 3 | 5 | 3 | 1 |
| MACHINERY | 7 | 4 | 8 | 18 | 6 | 7 |
| HEAT SICKNESS | 0 | 0 | 1 | 0 | 0 | 0 |
| GENERAL | 102 | 121 | 156 | 127 | 121 | 143 |
| FIRES | 0 | 0 | 0 | 1 | 0 | 0 |
| FALL OF GROUND | 3 | 9 | 8 | 9 | 7 | 7 |
| EXPLOSIVES | 0 | 1 | 1 | 1 | 0 | 0 |
| ELECTRICITY | 0 | 1 | 1 | 1 | 0 | 1 |
| CONVEYANCE ACCIDENTS | 6 | 11 | 8 | 9 | 5 | 4 |
| Total | 150 | 166 | 217 | 208 | 185 | 187 |



**Every mine worker returning from work unharmed every day.
Striving for zero harm in our lifetime.**



MHSC

Mine Health and Safety Council